

***Desmond Freeman***

***The Grand Tour***

***2023***

---

**CATALOGUE**

## Venice Capriccio 1

\$15,000

original colour  
710 x 1420mm

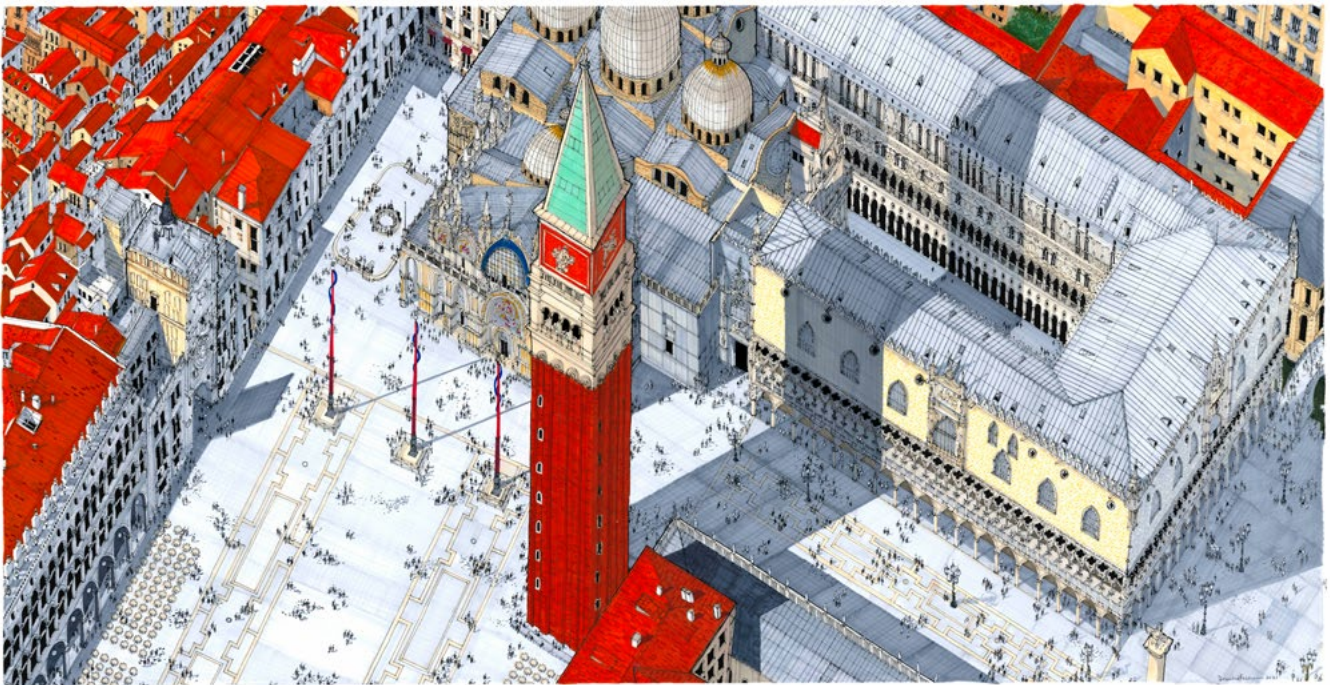


t. 02 9331 4676  
e. [mw\\_art@bigpond.net.au](mailto:mw_art@bigpond.net.au)  
[www.maunsellwickes.com](http://www.maunsellwickes.com)

## Venice Capriccio 2

\$15,000

original colour  
710 x 1420mm



t. 02 9331 4676  
e. [mw\\_art@bigpond.net.au](mailto:mw_art@bigpond.net.au)  
[www.maunsellwickes.com](http://www.maunsellwickes.com)



## Venice Panorama Left

\$15,000

original colour  
710 x 1420mm



t. 02 9331 4676  
e. [mw\\_art@bigpond.net.au](mailto:mw_art@bigpond.net.au)  
[www.maunsellwickes.com](http://www.maunsellwickes.com)



## Venice Panorama Right

\$15,000

original colour  
710 x 1420mm



t. 02 9331 4676  
e. [mw\\_art@bigpond.net.au](mailto:mw_art@bigpond.net.au)  
[www.maunsellwickes.com](http://www.maunsellwickes.com)

## Pavement, Basilica San Clemente, Rome

\$1,750

original colour  
325 x 230mm



Pavement, Basilica of San Clemente, Rome



t. 02 9331 4676  
e. [mw\\_art@bigpond.net.au](mailto:mw_art@bigpond.net.au)  
[www.maunsellwickes.com](http://www.maunsellwickes.com)



**Roman Floor Mosaic 1st century B.E.  
Guido Castle, Rome**

**\$2,200**

original colour  
500 x 500mm



Roman floor mosaic, near Guido Castle, Rome - late first century C.E.

Diamond Freeman 2021



t. 02 9331 4676  
e. [mw\\_art@bigpond.net.au](mailto:mw_art@bigpond.net.au)  
[www.maunsellwickes.com](http://www.maunsellwickes.com)



## Emperor John II Roman mosaic

\$1,750

original colour  
500 x 500mm



t. 02 9331 4676  
e. [mw\\_art@bigpond.net.au](mailto:mw_art@bigpond.net.au)  
[www.maunsellwickes.com](http://www.maunsellwickes.com)



## Empress Irene Roman mosaic

\$1,750

original colour  
500 x 500mm



t. 02 9331 4676  
e. [mw\\_art@bigpond.net.au](mailto:mw_art@bigpond.net.au)  
[www.maunsellwickes.com](http://www.maunsellwickes.com)



## Rome, Italy

\$5,250

original colour  
700 x 1000mm



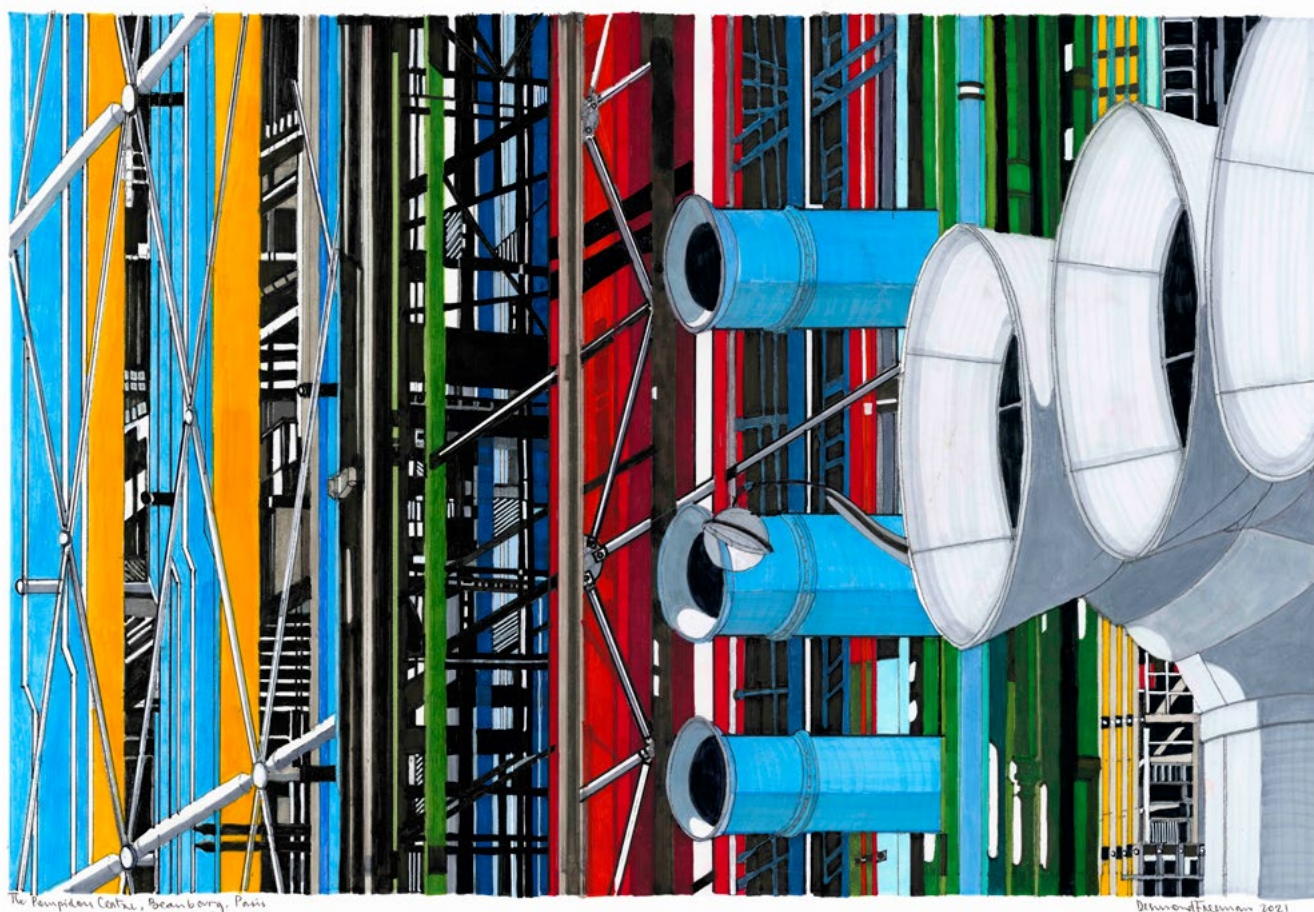
t. 02 9331 4676  
e. [mw\\_art@bigpond.net.au](mailto:mw_art@bigpond.net.au)  
[www.maunsellwickes.com](http://www.maunsellwickes.com)



## **The Pompidou Centre, Beaubourg, Paris**

**\$3,500**

original colour  
405 X 605mm

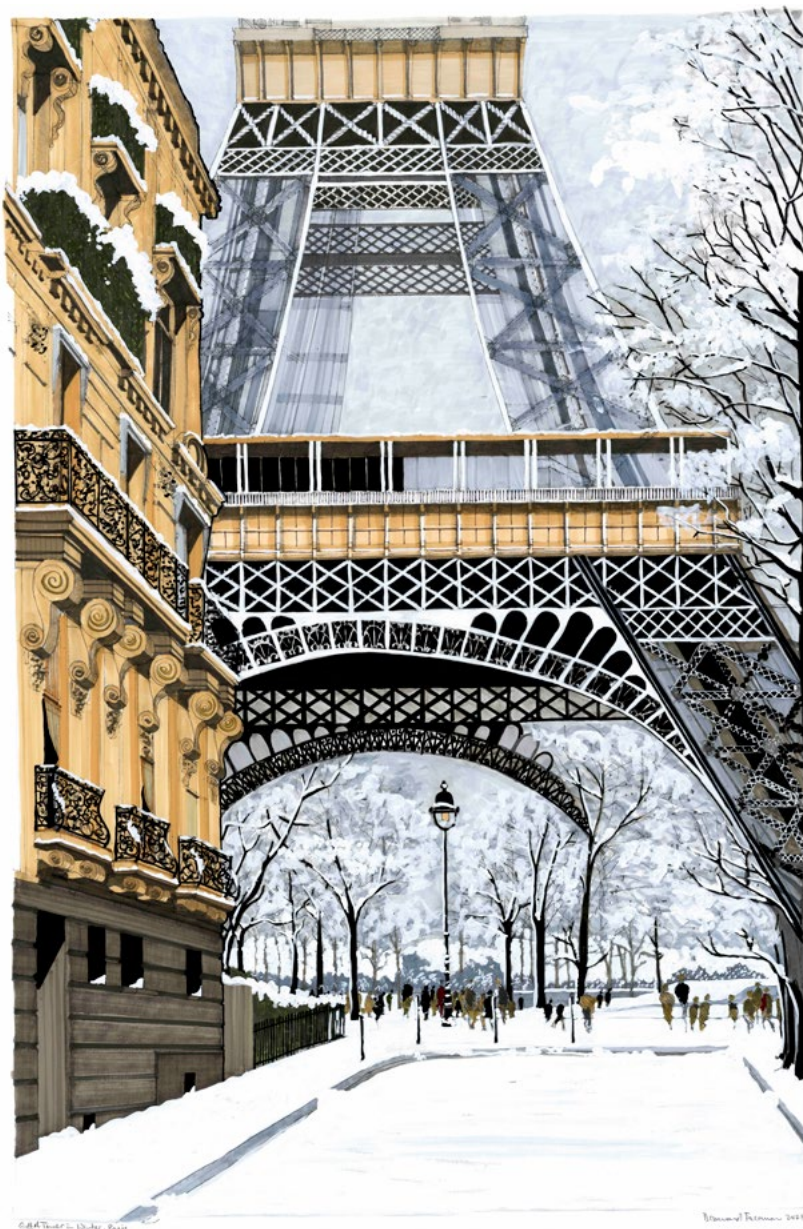


t. 02 9331 4676  
e. [mw\\_art@bigpond.net.au](mailto:mw_art@bigpond.net.au)  
[www.maunsellwickes.com](http://www.maunsellwickes.com)

## Eiffel Tower in Winter, Paris

\$4,500

original colour  
900 x 605mm



t. 02 9331 4676  
e. [mw\\_art@bigpond.net.au](mailto:mw_art@bigpond.net.au)  
[www.maunsellwickes.com](http://www.maunsellwickes.com)



## Part of a Roman Mosaic from a House in Pompeii 1st century BE

\$2,200

original colour  
500 x 500mm



Roman mosaic from a house in Pompeii - 1st century B.C.

Demetrius 2021



t. 02 9331 4676  
e. [mw\\_art@bigpond.net.au](mailto:mw_art@bigpond.net.au)  
[www.maunsellwickes.com](http://www.maunsellwickes.com)



**Merchant's House decorated in the style of  
the Venetian Gothic, Rio Panada, Venice**

**\$2,500**

original colour  
280 x 250mm



t. 02 9331 4676  
e. [mw\\_art@bigpond.net.au](mailto:mw_art@bigpond.net.au)  
[www.maunsellwickes.com](http://www.maunsellwickes.com)

## On the Fondamento del Gaffaro, Venice

\$2,500

original colour  
275 x 290mm



t. 02 9331 4676  
e. [mw\\_art@bigpond.net.au](mailto:mw_art@bigpond.net.au)  
[www.maunsellwickes.com](http://www.maunsellwickes.com)



## **Detail Foscari Arcade, Doge's Palace, Venice**

**\$2,500**

original colour  
250 x 280mm



t. 02 9331 4676  
e. [mw\\_art@bigpond.net.au](mailto:mw_art@bigpond.net.au)  
[www.maunsellwickes.com](http://www.maunsellwickes.com)



## **Torre dell' Orologio, Piazza San Marco, 1496 - 1500, Venice**

**\$3,500**

original colour  
580 x 180mm



t. 02 9331 4676  
e. [mw\\_art@bigpond.net.au](mailto:mw_art@bigpond.net.au)  
[www.maunsellwickes.com](http://www.maunsellwickes.com)

## Campo San Polo, Venice

\$5,250

original colour  
600 x 900mm



t. 02 9331 4676  
e. [mw\\_art@bigpond.net.au](mailto:mw_art@bigpond.net.au)  
[www.maunsellwickes.com](http://www.maunsellwickes.com)



## Opera Garnier, Paris Aerial 1

\$8,000

original linework  
1520 x 1130mm

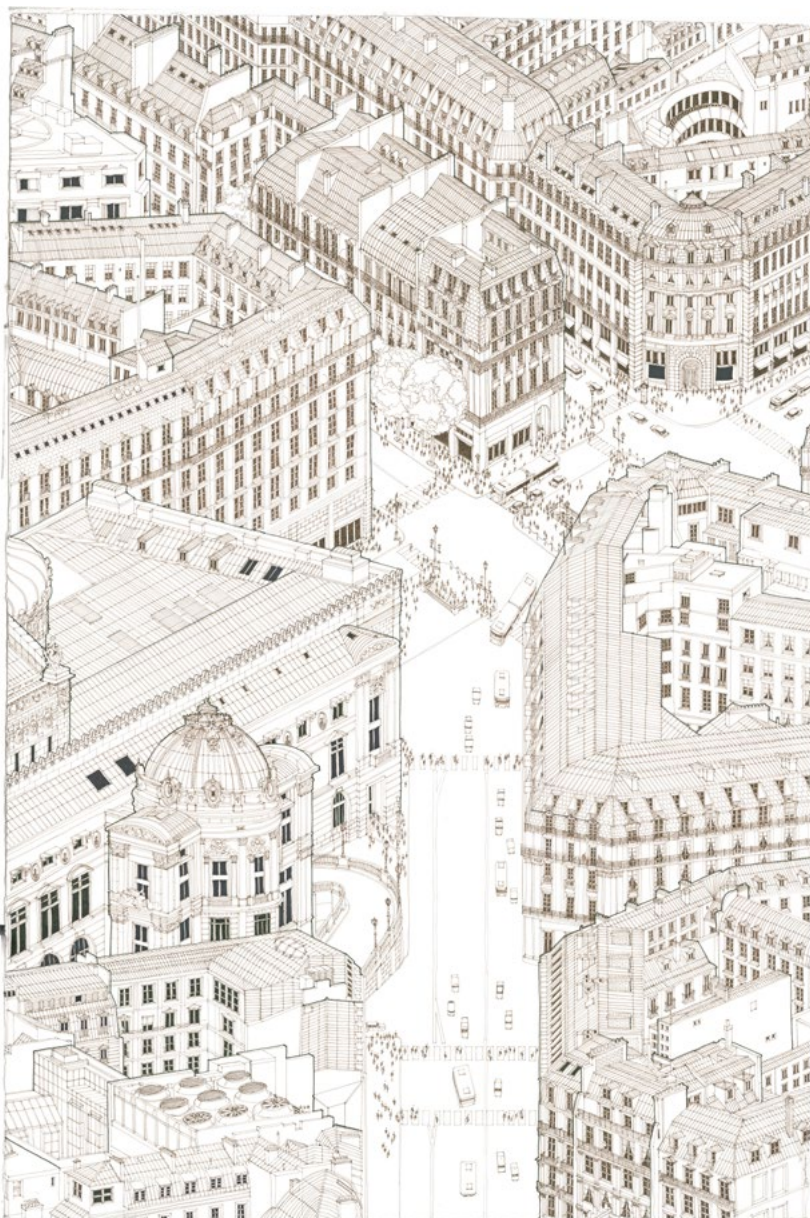


t. 02 9331 4676  
e. [mw\\_art@bigpond.net.au](mailto:mw_art@bigpond.net.au)  
[www.maunsellwickes.com](http://www.maunsellwickes.com)

## Opera Garnier, Paris Aerial 2

\$8,000

original linework  
1520 x 1130mm



t. 02 9331 4676  
e. [mw\\_art@bigpond.net.au](mailto:mw_art@bigpond.net.au)  
[www.maunsellwickes.com](http://www.maunsellwickes.com)



## Cour Carrée, The Louvre, Paris

\$1,500

original colour  
370 x 260mm



t. 02 9331 4676  
e. [mw\\_art@bigpond.net.au](mailto:mw_art@bigpond.net.au)  
[www.maunsellwickes.com](http://www.maunsellwickes.com)

## **Pavilion Daru, The Louvre, Paris**

**\$1,500**

original colour  
395 x 255mm



Pavillon Daru, The Louvre, Paris

Dominic Freeman 2017



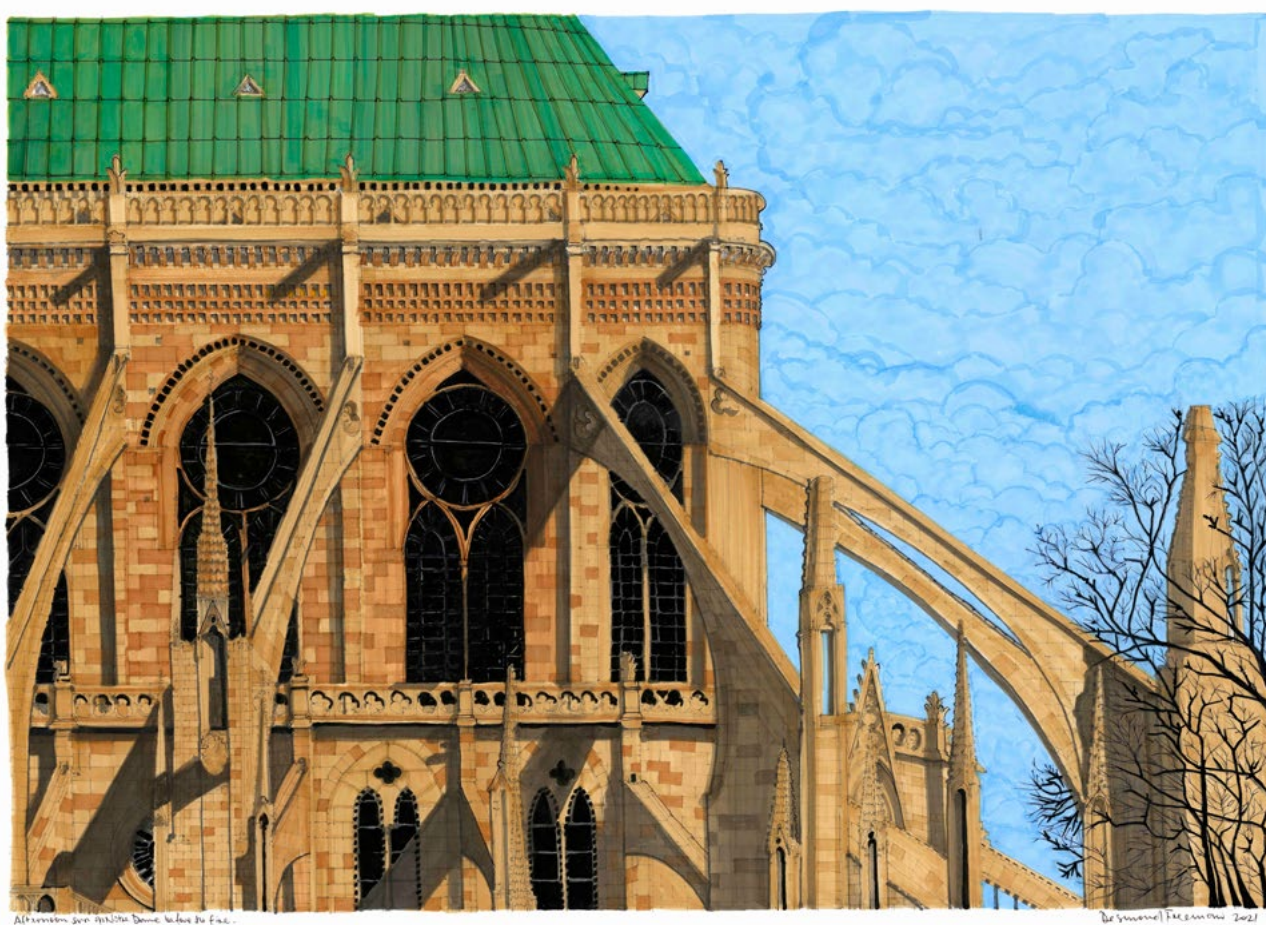
t. 02 9331 4676  
e. [mw\\_art@bigpond.net.au](mailto:mw_art@bigpond.net.au)  
[www.maunsellwickes.com](http://www.maunsellwickes.com)



## Afternoon Sun on Notre Dame before the fire

\$3,250

original colour  
425 X 596mm

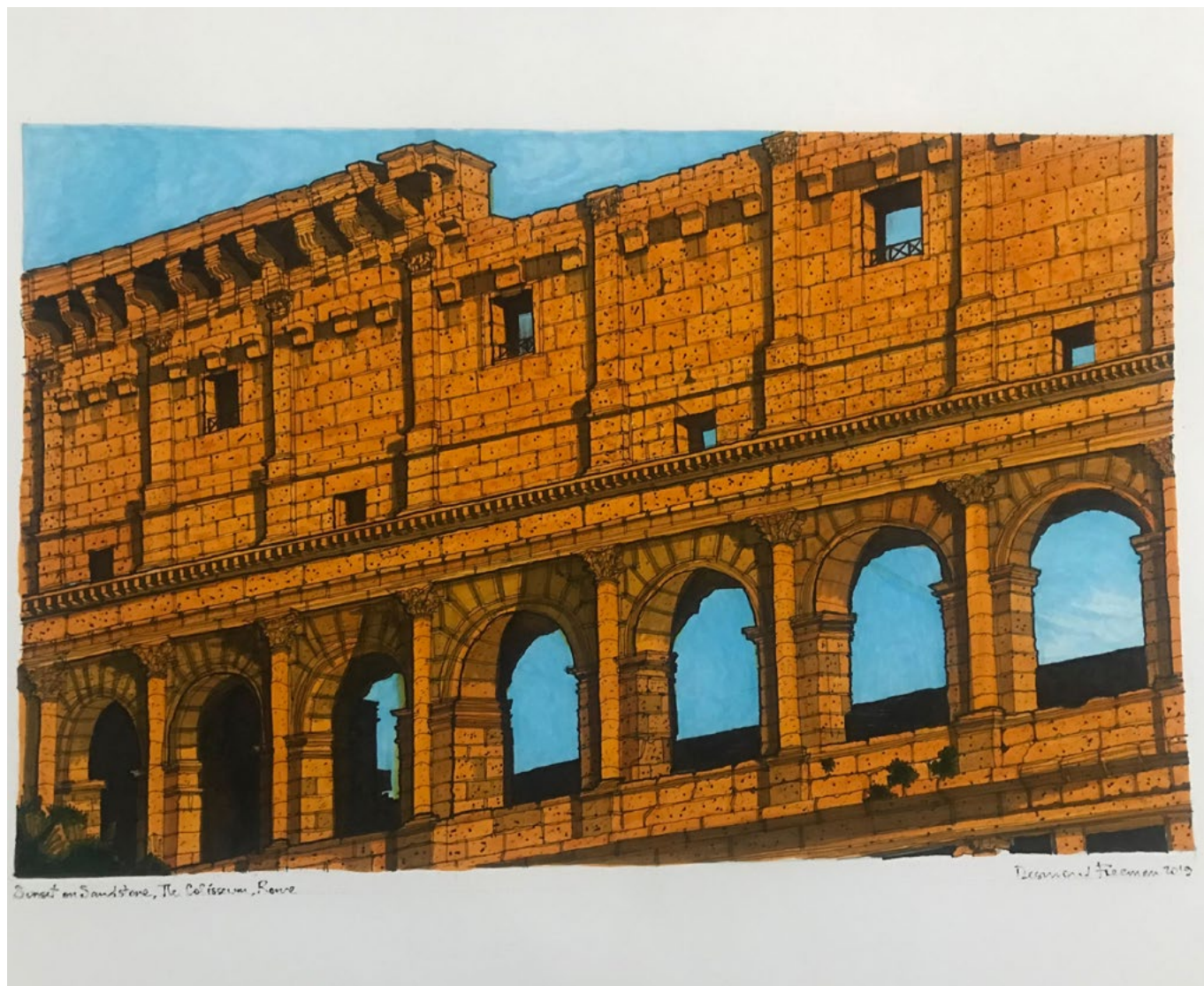


t. 02 9331 4676  
e. [mw\\_art@bigpond.net.au](mailto:mw_art@bigpond.net.au)  
[www.maunsellwickes.com](http://www.maunsellwickes.com)

## Sunset on Sandstone, The Colosseum, Rome

\$3,250

original colour  
270 x 430mm



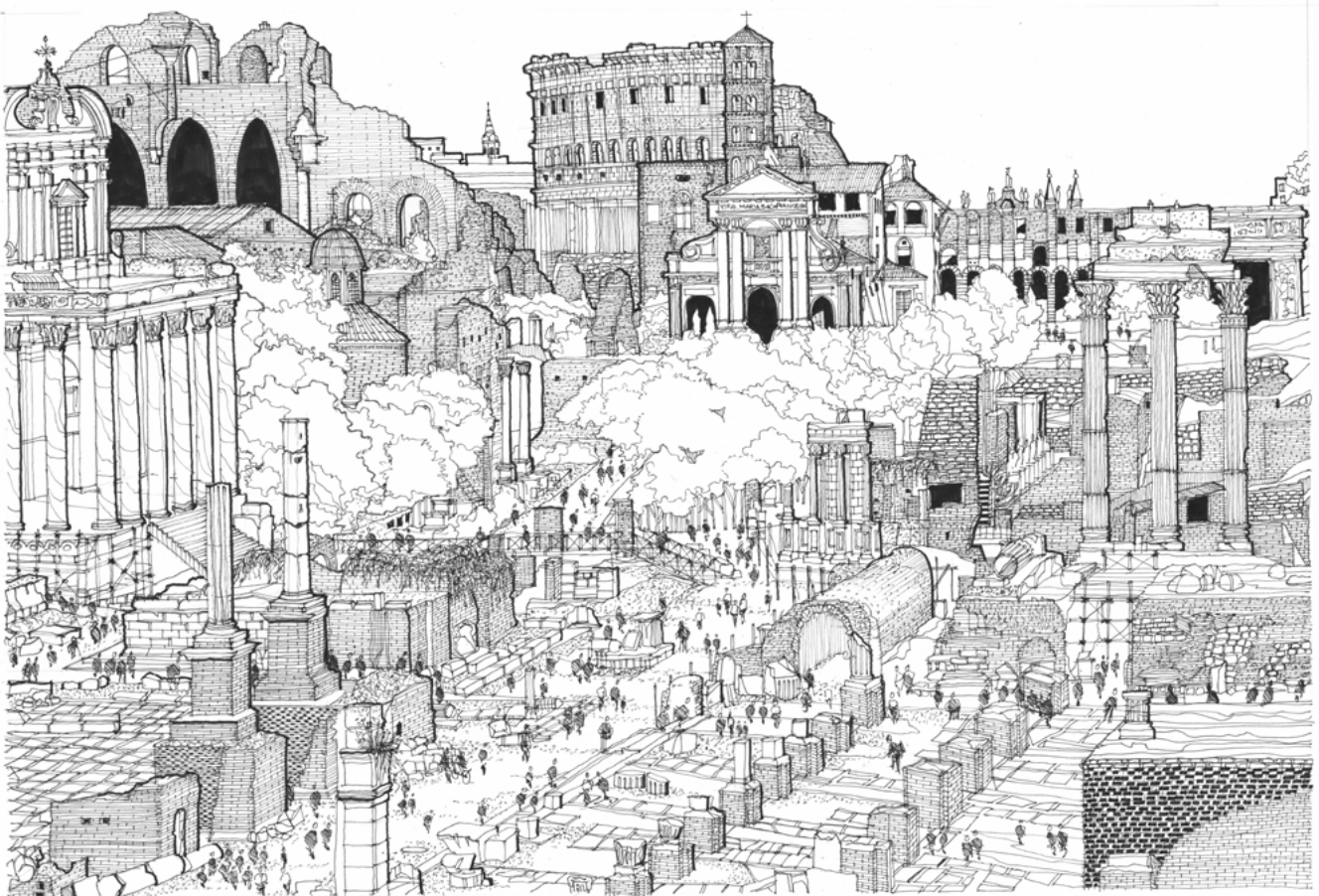
t. 02 9331 4676  
e. [mw\\_art@bigpond.net.au](mailto:mw_art@bigpond.net.au)  
[www.maunsellwickes.com](http://www.maunsellwickes.com)



## **Roman Forum**

**\$5,500**

original black and white  
320 x 470mm



t. 02 9331 4676  
e. [mw\\_art@bigpond.net.au](mailto:mw_art@bigpond.net.au)  
[www.maunsellwickes.com](http://www.maunsellwickes.com)

## Votive offerings mosaic c 360 Santa Constanza, Rome

\$2,250

original colour  
275 x 120mm



Votive offerings mosaic c. 360 Santa Constanza, Rome



t. 02 9331 4676  
e. [mw\\_art@bigpond.net.au](mailto:mw_art@bigpond.net.au)  
[www.maunsellwickes.com](http://www.maunsellwickes.com)



## Trajan's Column, Rome

\$3,250

original colour  
365 x 275mm



Trajan's Column, Rome



t. 02 9331 4676  
e. [mw\\_art@bigpond.net.au](mailto:mw_art@bigpond.net.au)  
[www.maunsellwickes.com](http://www.maunsellwickes.com)



## Roman Theatre Masks

\$3,250

original colour  
320 x 465mm



Roman Theatre Masks - Mosaic from Hadrian's Villa



t. 02 9331 4676  
e. [mw\\_art@bigpond.net.au](mailto:mw_art@bigpond.net.au)  
[www.maunsellwickes.com](http://www.maunsellwickes.com)



## *The Ponte, Saint' Angelo, Rome*

\$3,550

original colour  
600 x 500mm



**t.** 02 9331 4676  
**e.** mw\_art@bigpond.net.au  
**www.**maunsellwicks.com

## Zeus and Ganymede, Roman Mosaic

\$2,250

original colour  
360 x 255mm



Zeus and Ganymede, Roman Mosaic 2nd century AD.



t. 02 9331 4676  
e. [mw\\_art@bigpond.net.au](mailto:mw_art@bigpond.net.au)  
[www.maunsellwickes.com](http://www.maunsellwickes.com)



## Byzantine Mosaic Inspiration

\$2,500

original colour  
270 x 235mm



Byzantine Mosaic Inspiration



t. 02 9331 4676  
e. [mw\\_art@bigpond.net.au](mailto:mw_art@bigpond.net.au)  
[www.maunsellwickes.com](http://www.maunsellwickes.com)



## Roman Fish Mosaic

\$2,200

original colour  
225 x 200mm



Roman Fish Mosaic



t. 02 9331 4676  
e. [mw\\_art@bigpond.net.au](mailto:mw_art@bigpond.net.au)  
[www.maunsellwickes.com](http://www.maunsellwickes.com)



## The Red Shutter, Rome

\$3,250

original colour  
600 x 370mm



The Red Shutter, Rome



t. 02 9331 4676  
e. [mw\\_art@bigpond.net.au](mailto:mw_art@bigpond.net.au)  
[www.maunsellwickes.com](http://www.maunsellwickes.com)

## Roman Forum

\$5,250

original colour  
670 x 1000mm



t. 02 9331 4676  
e. [mw\\_art@bigpond.net.au](mailto:mw_art@bigpond.net.au)  
[www.maunsellwickes.com](http://www.maunsellwickes.com)



## St Peter's Square Vatican City, Rome

\$5,250

original black and white  
515 x 700mm



t. 02 9331 4676  
e. [mw\\_art@bigpond.net.au](mailto:mw_art@bigpond.net.au)  
[www.maunsellwickes.com](http://www.maunsellwickes.com)



## **Rome Ancient and Modern**

**\$5,500**

original colour  
600 x 600mm



Rome - Ancient and Modern



t. 02 9331 4676  
e. [mw\\_art@bigpond.net.au](mailto:mw_art@bigpond.net.au)  
[www.maunsellwickes.com](http://www.maunsellwickes.com)



## The Arch of Titus, Winged Figures of Victory, Rome

\$5,250

original colour  
400 x 590mm



t. 02 9331 4676  
e. [mw\\_art@bigpond.net.au](mailto:mw_art@bigpond.net.au)  
[www.maunsellwickes.com](http://www.maunsellwickes.com)

## Il Passetto di Palazzo Senatorio, Rome

\$3,250

original colour  
420 x 300mm



Il Passetto di Palazzo Senatorio, Roma



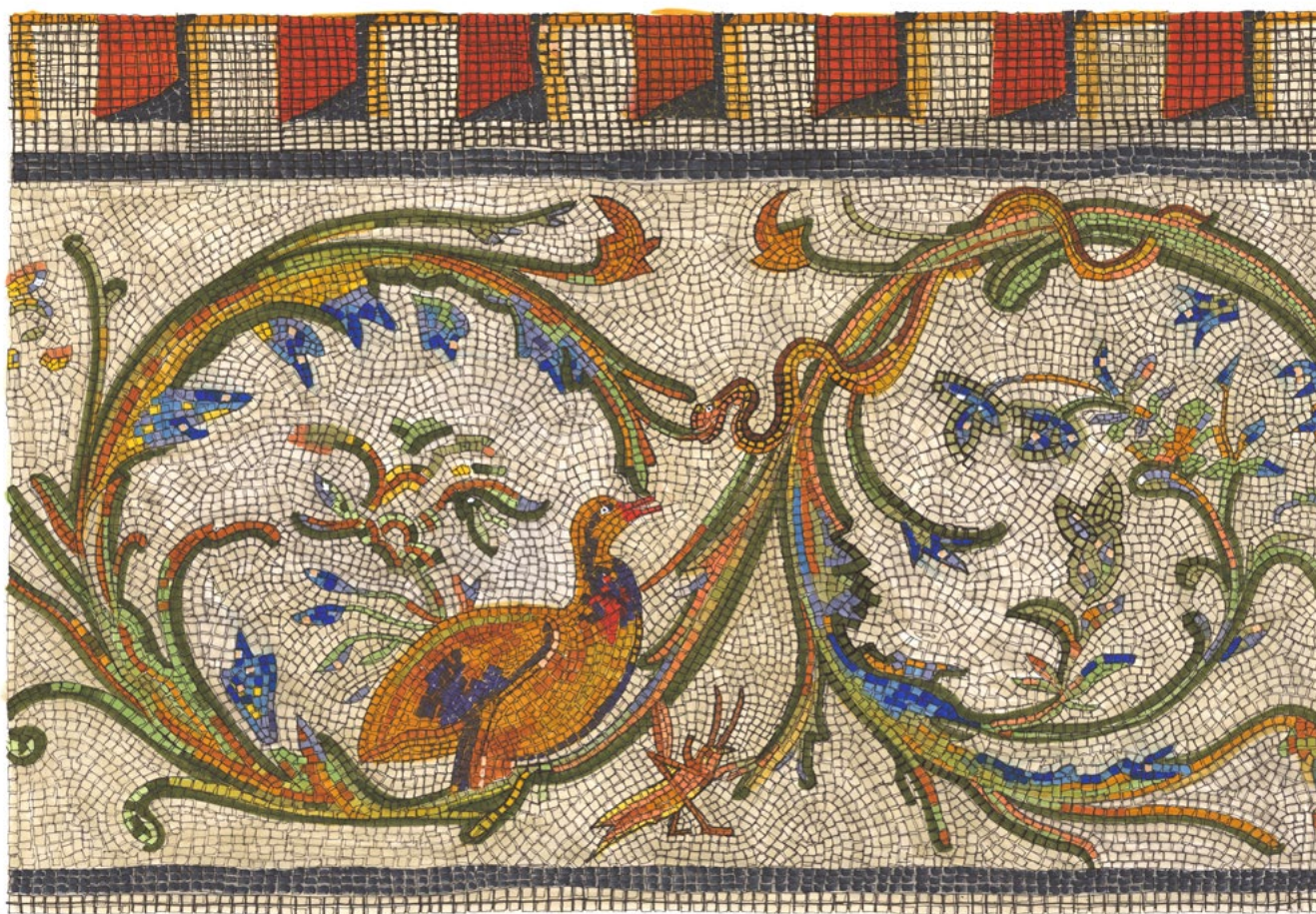
t. 02 9331 4676  
e. [mw\\_art@bigpond.net.au](mailto:mw_art@bigpond.net.au)  
[www.maunsellwickes.com](http://www.maunsellwickes.com)



## The Duck, the Serpent and the Cricket, Roman Mosaic

\$2,250

original colour  
300 x 440mm



The Duck, the Serpent and the Cricket, Roman Mosaic



t. 02 9331 4676  
e. [mw\\_art@bigpond.net.au](mailto:mw_art@bigpond.net.au)  
[www.maunsellwickes.com](http://www.maunsellwickes.com)



## The Pantheon, Rome

\$5,500

original colour  
685 x 1000mm



t. 02 9331 4676  
e. [mw\\_art@bigpond.net.au](mailto:mw_art@bigpond.net.au)  
[www.maunsellwickes.com](http://www.maunsellwickes.com)



## **Antennas in the Trionfale Quarter, Rome**

**\$2,250**

original colour  
330 x 450mm



*Antennas in the Trionfale quarter, Rome*

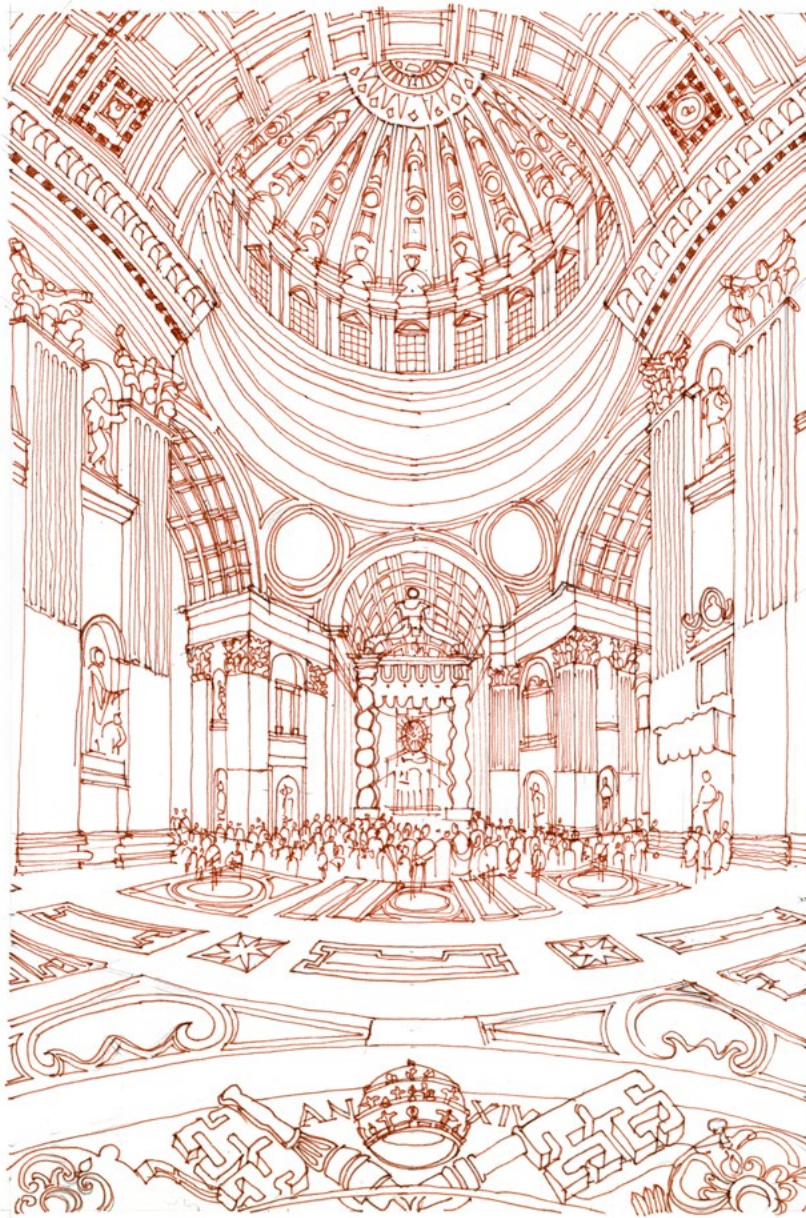


t. 02 9331 4676  
e. [mw\\_art@bigpond.net.au](mailto:mw_art@bigpond.net.au)  
[www.maunsellwickes.com](http://www.maunsellwickes.com)

## **St Peter's Basilica – Interior Towards the High Altar**

**\$1,500**

original sepia  
305 x 200mm



t. 02 9331 4676  
e. [mw\\_art@bigpond.net.au](mailto:mw_art@bigpond.net.au)  
[www.maunsellwickes.com](http://www.maunsellwickes.com)



## Arch of Titus overlooking the Forum, Rome

\$1,500

original sepia  
320 x 465mm



t. 02 9331 4676  
e. [mw\\_art@bigpond.net.au](mailto:mw_art@bigpond.net.au)  
[www.maunsellwickes.com](http://www.maunsellwickes.com)

## **Surviving Masonry, The Forum, Rome**

**\$1,500**

original sepia  
365 x 275mm



t. 02 9331 4676  
e. [mw\\_art@bigpond.net.au](mailto:mw_art@bigpond.net.au)  
[www.maunsellwickes.com](http://www.maunsellwickes.com)



## The Pantheon, Rome

\$3,250

monochrome  
320 x 465mm



t. 02 9331 4676  
e. [mw\\_art@bigpond.net.au](mailto:mw_art@bigpond.net.au)  
[www.maunsellwickes.com](http://www.maunsellwickes.com)

## Elephant Carrying an Egyptian Obelisque, Piazza Minerva, Rome

\$2,750

original colour  
270 x 280mm



Elephant carrying an Egyptian Obelisque, Piazza Minerva, Rome



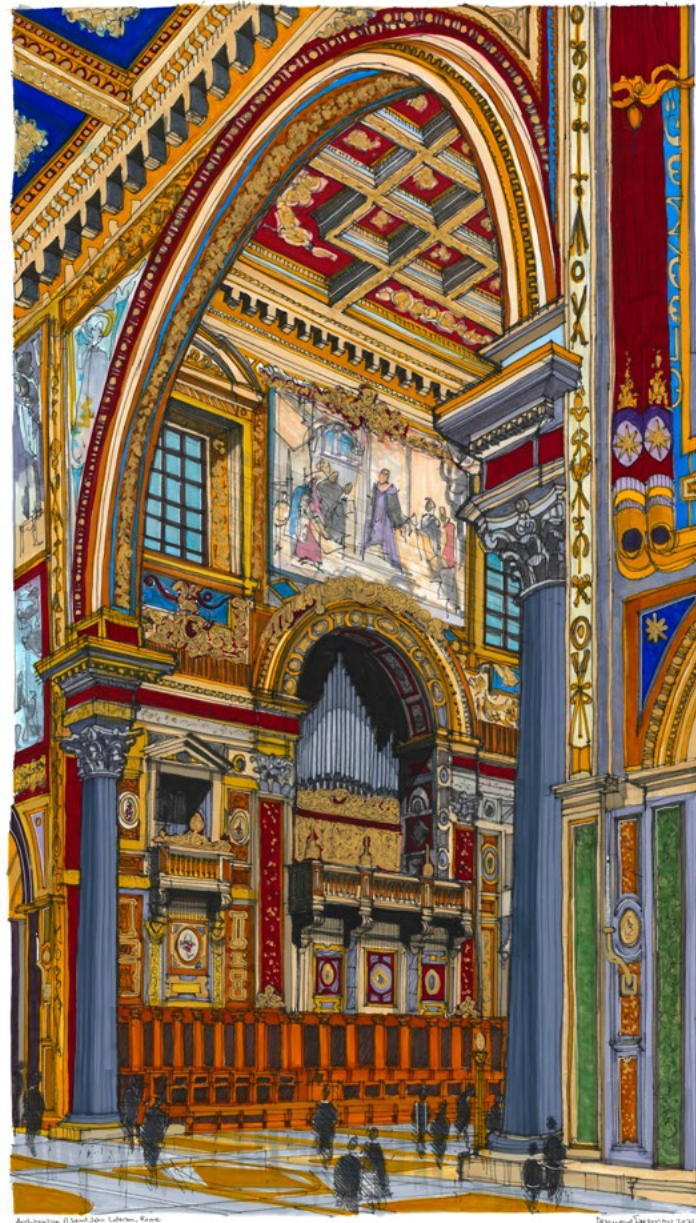
t. 02 9331 4676  
e. [mw\\_art@bigpond.net.au](mailto:mw_art@bigpond.net.au)  
[www.maunsellwickes.com](http://www.maunsellwickes.com)



## Archbasilica of St John Lateran, Rome

\$6,500

original colour  
860 x 495mm



t. 02 9331 4676  
e. [mw\\_art@bigpond.net.au](mailto:mw_art@bigpond.net.au)  
[www.maunsellwickes.com](http://www.maunsellwickes.com)

## Galleria Sciarra, Trevi District, Rome

\$6,500

original colour  
810 x 500mm



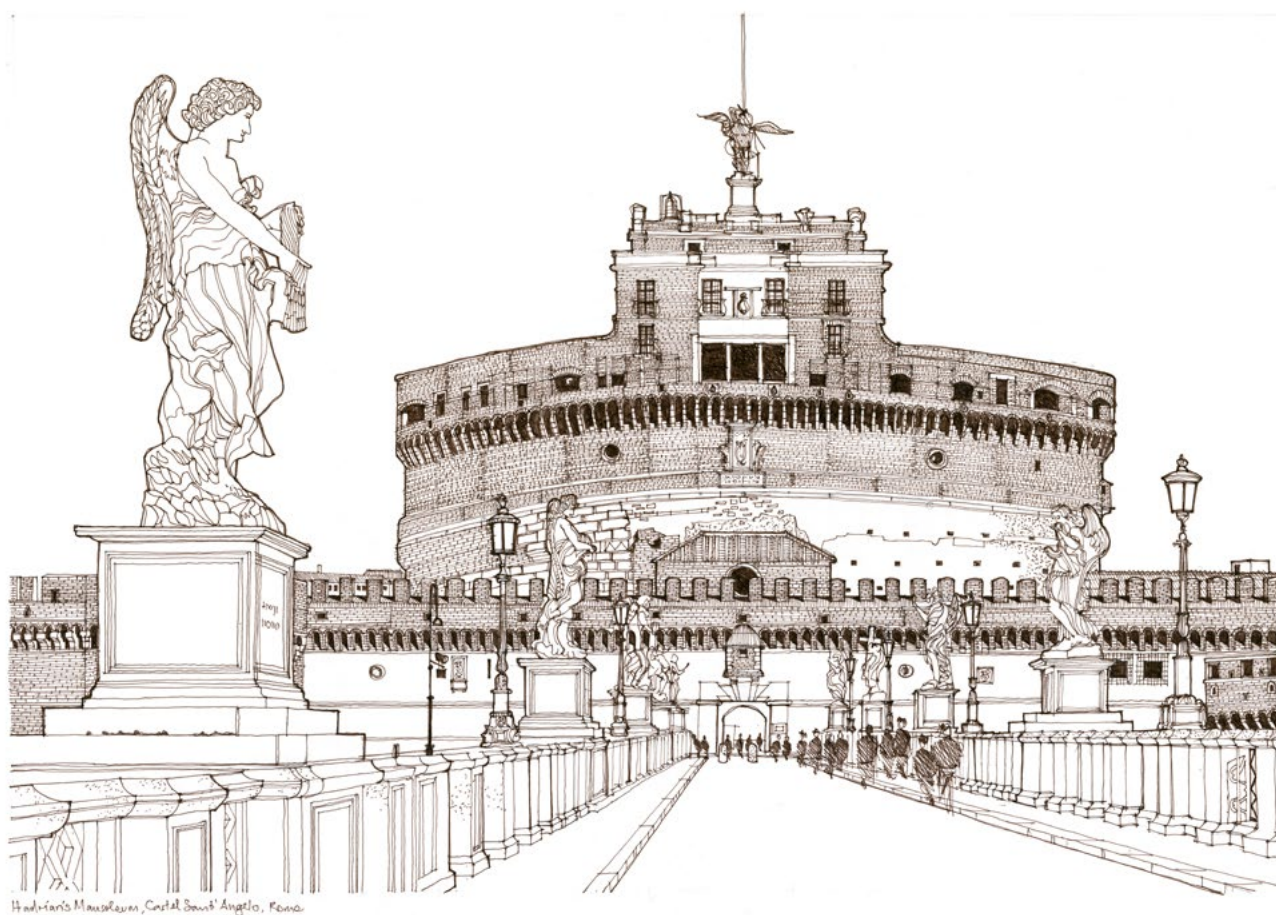
t. 02 9331 4676  
e. [mw\\_art@bigpond.net.au](mailto:mw_art@bigpond.net.au)  
[www.maunsellwickes.com](http://www.maunsellwickes.com)



## Hadrian's Mausoleum

\$2,250

original sepia  
320 x 465mm



t. 02 9331 4676  
e. [mw\\_art@bigpond.net.au](mailto:mw_art@bigpond.net.au)  
[www.maunsellwickes.com](http://www.maunsellwickes.com)

## Paris opera House RHS

\$16,000

original colour  
1520 x 1130mm



t. 02 9331 4676  
e. [mw\\_art@bigpond.net.au](mailto:mw_art@bigpond.net.au)  
[www.maunsellwickes.com](http://www.maunsellwickes.com)



## **Memories of the Sainte Chapelle, Paris 1**

**\$2,250**

acrylic and gold leaf on canvas original colour  
350 x 350mm



t. 02 9331 4676  
e. [mw\\_art@bigpond.net.au](mailto:mw_art@bigpond.net.au)  
[www.maunsellwicks.com](http://www.maunsellwicks.com)

## **Memories of the Sainte Chapelle, Paris 2**

**\$2,250**

acrylic and gold leaf on canvas original colour  
350 x 350mm



t. 02 9331 4676  
e. [mw\\_art@bigpond.net.au](mailto:mw_art@bigpond.net.au)  
[www.maunsellwickes.com](http://www.maunsellwickes.com)



## **Memories of the Sainte Chapelle, Paris 3**

**\$2,250**

acrylic and gold leaf on canvas original colour  
350 x 350mm



t. 02 9331 4676  
e. [mw\\_art@bigpond.net.au](mailto:mw_art@bigpond.net.au)  
[www.maunsellwickes.com](http://www.maunsellwickes.com)

## **Memories of the Sainte Chapelle, Paris 4**

**\$2,250**

acrylic and gold leaf on canvas original colour  
350 x 350mm



t. 02 9331 4676  
e. [mw\\_art@bigpond.net.au](mailto:mw_art@bigpond.net.au)  
[www.maunsellwickes.com](http://www.maunsellwickes.com)



## **Memories of the Sainte Chapelle, Paris 5**

**\$2,250**

acrylic and gold leaf on canvas original colour  
350 x 350mm



t. 02 9331 4676  
e. [mw\\_art@bigpond.net.au](mailto:mw_art@bigpond.net.au)  
[www.maunsellwickes.com](http://www.maunsellwickes.com)

## Memories of the Sainte Chapelle, Paris 6

\$2,250

acrylic and gold leaf on canvas original colour  
350 x 350mm



t. 02 9331 4676  
e. [mw\\_art@bigpond.net.au](mailto:mw_art@bigpond.net.au)  
[www.maunsellwickes.com](http://www.maunsellwickes.com)



## **Memories of the Sainte Chapelle, Paris 7**

**\$2,250**

acrylic and gold leaf on canvas original colour  
350 x 350mm



t. 02 9331 4676  
e. [mw\\_art@bigpond.net.au](mailto:mw_art@bigpond.net.au)  
[www.maunsellwickes.com](http://www.maunsellwickes.com)

## **Memories of the Sainte Chapelle, Paris 8**

**\$2,250**

acrylic and gold leaf on canvas original colour  
350 x 350mm



t. 02 9331 4676  
e. [mw\\_art@bigpond.net.au](mailto:mw_art@bigpond.net.au)  
[www.maunsellwickes.com](http://www.maunsellwickes.com)





mw

**maunsell wickes**

19 glenmore road  
paddington nsw 2021  
t. 02 9331 4676

e. [mw\\_art@bigpond.net.au](mailto:mw_art@bigpond.net.au)  
tues-sat 11-5.30pm sun 12-5pm  
[www.maunsellwickes.com](http://www.maunsellwickes.com)